



# GAT MONTHLY MEMBERSHIP PROGRESS REPORT

Results as of: 4/30/2024

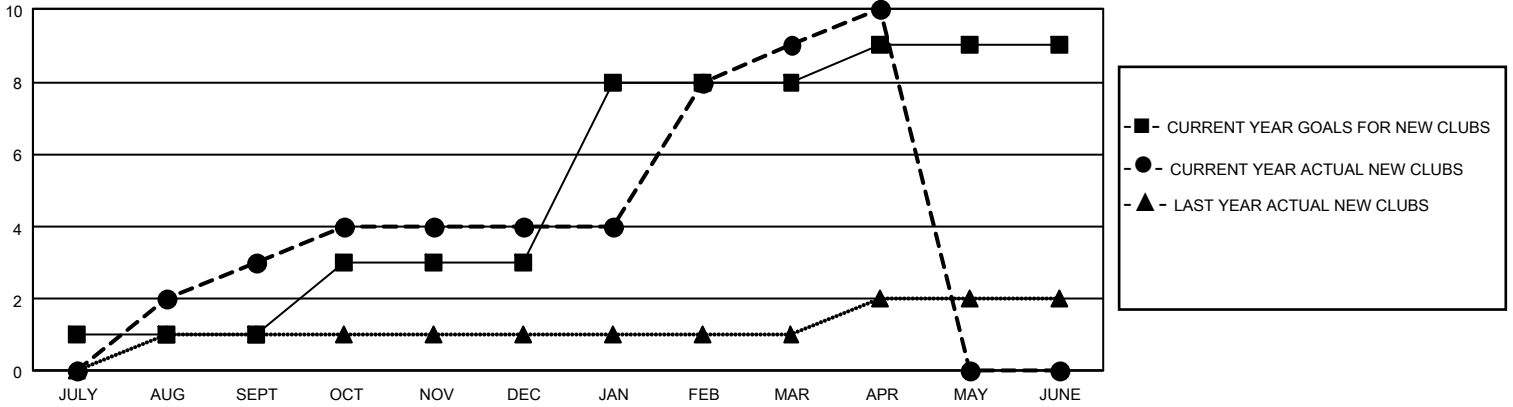
## GMT Constitutional Area 4, Group D

REPORT DOES NOT INCLUDE CLUBS IN UNDISTRICTED AREAS.

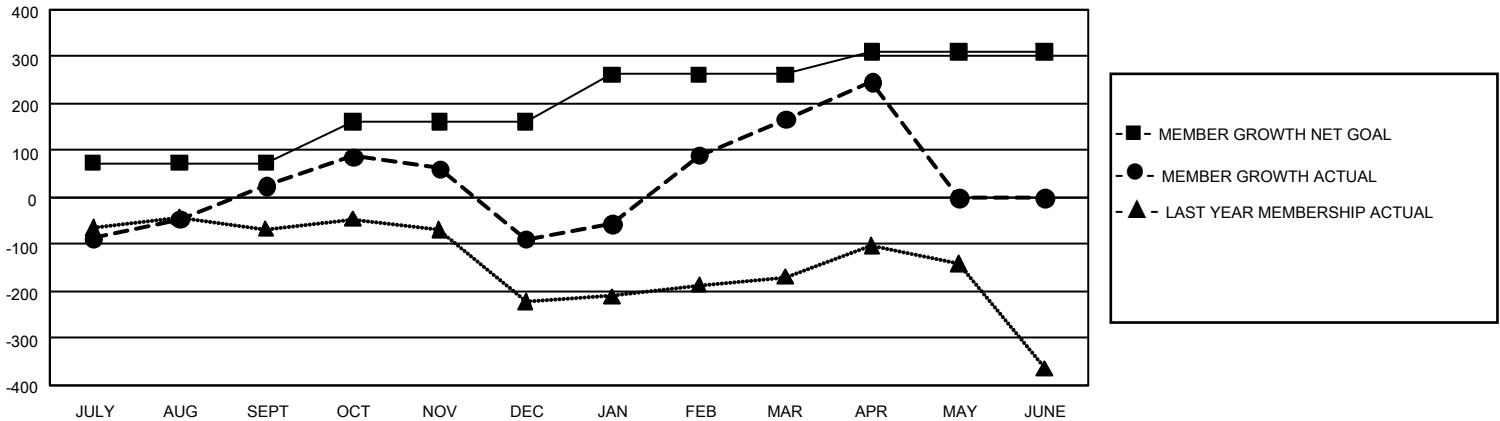
Clubs			
RESULTS FOR 2023-2024			
QUARTER	NEW CLUB GOAL	NEW CLUBS	DROPPED CLUBS
JULY/AUG/SEPT	3	3	5
OCT/NOV/DEC	6	1	0
JAN/FEB/MAR	15	5	3
APR/MAY/JUNE	3	1	0

Members			
RESULTS FOR 2023-2024			
QUARTER	MEMBER GROWTH NET GOAL	MEMBER GROWTH ACTUAL	DROPPED MEMBERS ACTUAL (including transfers)
JULY/AUG/SEPT	74	218	179
OCT/NOV/DEC	87	141	243
JAN/FEB/MAR	101	336	61
APR/MAY/JUNE	48	100	16

GOALS AND ACTUAL NEW CLUBS CUMULATIVE



GOALS AND ACTUAL MEMBERS CUMULATIVE



<b>DROPPED CLUBS: 8</b>	155 CLUBS OF 271 ADDED 1 OR MORE NEW MEMBERS	<b>GENDER DISTRIBUTION</b>	
		MALE 2,242 (40.18%) FEMALE 3,336 (59.78%) NON BINARY 0 (0.00%) PREFER NOT TO ANSWER 2 (0.04%)	
<b>DROPPED MEMBERS</b>		<a href="#">CLICK HERE FOR CUMULATIVE MEMBERSHIP DATA</a>	
DECEASED 25 CLUB CANCELLED 48 OTHER 426 <b>TOTAL 499</b>	TOTAL FAMILY UNIT MEMBERS 909 FAMILY MEMBERS PAYING HALF DUES 479		